

13



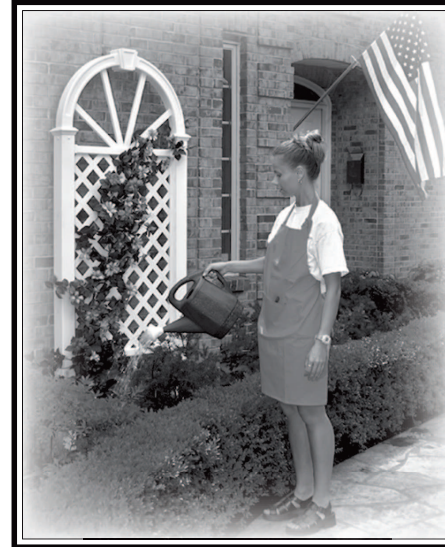
Dig two 12" deep holes in the desired location using the distance shown in (Fig. 2) on the front cover. Set the trellis into position, and use a level to check the posts. Once you are satisfied with the orientation, fill in the holes. For added stability in high wind or high traffic areas, we recommend using pre-mix concrete (not included).

Questions ?:

If you have any questions concerning the assembly or installation of this product and require assistance, please call our **Customer service department at 1-800-282-9346 (ext.#20)**, Weekdays from 8:00 am. to 4:00 pm. Eastern standard time.

If you have any comments or suggestions about our product or service, please let us know! Call: **1-800-282-9346 (ext.#24)**. or E-mail: **info@newenglandarbors.com**

To learn more about us, visit us on the web at: **www.newenglandarbors.com**



Nantucket Trellis

Assembly & Mounting Instructions

General Information:

- Read instructions through carefully before beginning assembly.
- Identify each component from material list.
- When assembling components, place on a non-abrasive surface to avoid scratches.
- Do not use excessive force when assembling components.
- In the event of missing or defective parts, please call our customer service department at **1-800-282-9346 (ext.#20)**.

Materials Included:

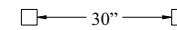
Part #	Description	Quantity
1	3 1/2" sq. x 78" Posts	2
2	1 3/4" sq. x 29 3/4" Top rail	1
3	1 3/4" sq. x 29 3/4" Bottom rail	1
4	7/8" x 1 1/2" x 19 5/8" Spokes	2
5	7/8" x 1 1/2" x 15 5/8" Spokes	2
6	Keystone	1
7	Arches	2
8	45 3/8" Lattice channels	2
9	29 1/2" x 48" Diamond lattice	1
10	Slotted half couplers	4
11	Hardware kit (Includes): 3/4" Self-tapping stainless screws	26

Materials (Optional):

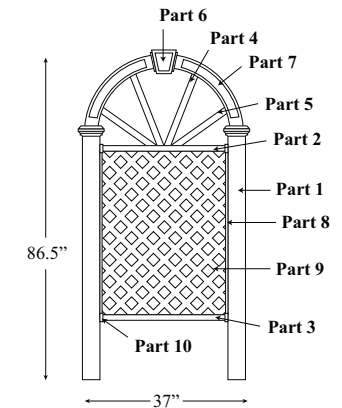
- Pre-mix concrete (recommended for added stability).

Tools Required:

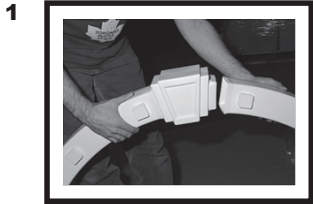
- Cordless drill with #2 Robertson bit
- Tape measure
- Level
- Shovel
- Pencil



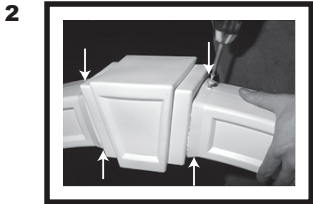
(Fig. 2)
Post layout for installation.



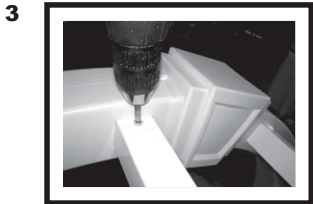
(Fig. 1)
Product dimensions & part identification.



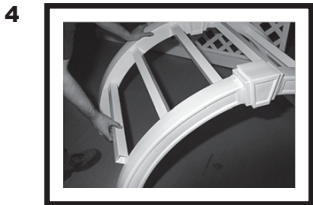
1 Making sure the spindle sockets are facing the same side, snap the left and right arch (part 3) onto the keystone (part 5). The left and right sides can be identified by a small L or R located at the solid end of each arch.



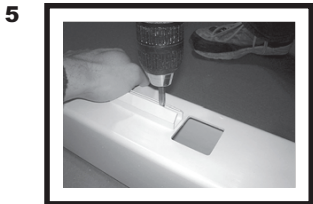
2 Using four screws, fasten the arches to the keystone on both sides as illustrated (arrows show each screw location). **Note:** all screws are self-tapping and require no pre-drilling. If you do have difficulty getting the screws started, drill a small pilot hole (no larger than 1/16"). Repeat steps 1 and 2 for the remaining keystone and arches.



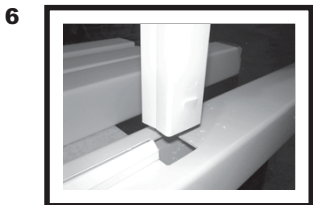
3 Place two spindles (part 6) over the sockets on either side of the keystone. Using one screw for each end, fasten the spindles to the arch as illustrated. Make sure the screw is positioned close to the arch wall to ensure proper attachment to the socket. Again, drill pilot holes if needed.



4 Place the remaining spindles onto the sockets, and fasten both ends of each spindle as shown in step 3. Set aside the completed arch assembly.



5 Lay out one of the posts (part 1) and center the lattice channel (part 8) between the two holes in the post. Using three screws, fasten the channel to the post at both ends and in the middle. Repeat this for the remaining posts.



6 Insert two rails (part 7) into the holes at each end of the lattice channel, making sure that the groove in each rail faces the channel. Push the rails in past the locking tabs.



7 Slip the lattice (part 2) into the grooves between the rails. Slide the lattice down to the post and into the lattice channel. Hold the lattice in place, and pull up on each rail until it catches on the tabs inside the post.



8 Holding the lattice in place, flip the panel over onto one of the other posts. Insert the rail ends into the holes, and carefully guide the lattice into the lattice channel. Make sure the rail ends are pushed in past the locking tabs. Repeat steps 6 through 8 for the opposite side panel.



9 Slip the trim caps over the top of each post as illustrated. Slide each cap down until it sits just above the top rail. The top of the side panel is determined by the rail which is closest to the end of the post. **Note:** you will need to pinch the tabs on the inside of the cap to allow it to slide over the post. *If you have not purchased the optional trim kit, please disregard this step.*



10 Place the post caps (part 4) onto the end of each post just above the trim caps. Push each cap on firmly, until the end of the post "bottoms out" on the inside of the cap.



11 Slip the base moldings onto the bottom of each post as illustrated. Slide each base molding up the post until it hits the bottom rail. *If you have not purchased the optional trim kit, please disregard this step.*



12 Insert the ends of the completed arch assembly into the top of the side panel posts as illustrated. With assistance, stand the arbor up.